

AUTOMATIC TALLY MAZE

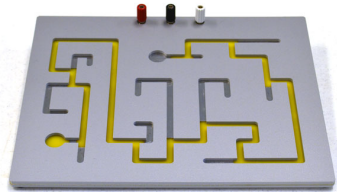
GUÍA
RAPIDA

Modelo
20017



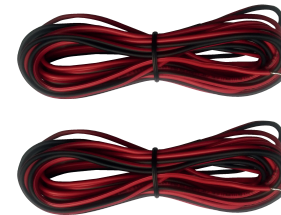
ELEMENTOS/ACCESORIOS

a.



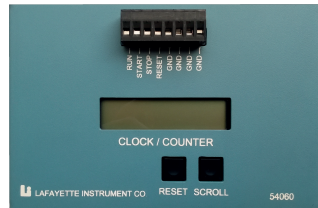
Automatic Tally Maze

d.



Juego de cables de conexión

b.



Clock / Counter

f.



Extensión

c.



Impulse Response Counter

g.

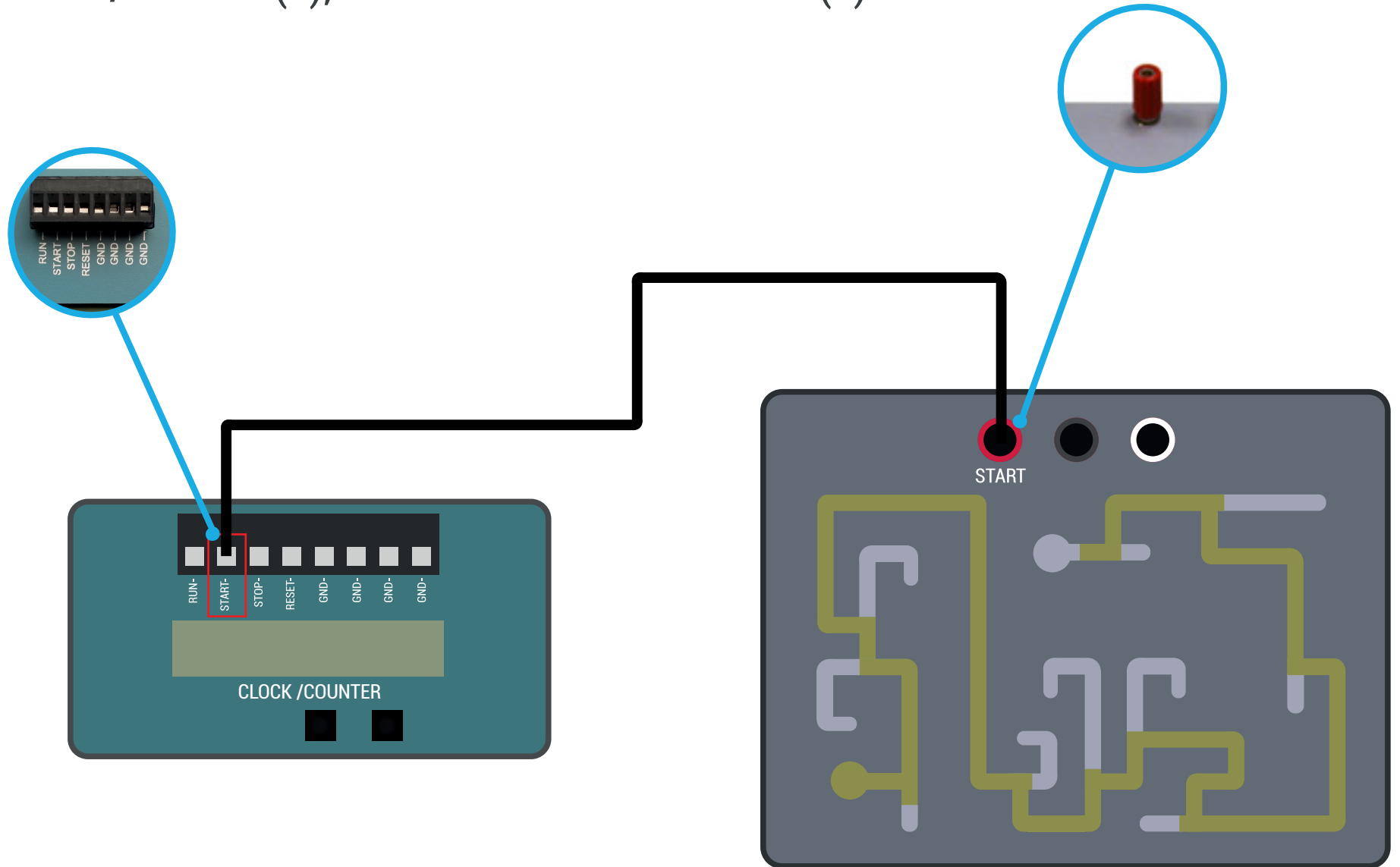


Stylus

(a) Automatic Tally Maze, (b) Clock / Counter , (c) Impulse Response Counter, (d) Juego de cables de conexión, (f) Extensión, (g) Stylus.

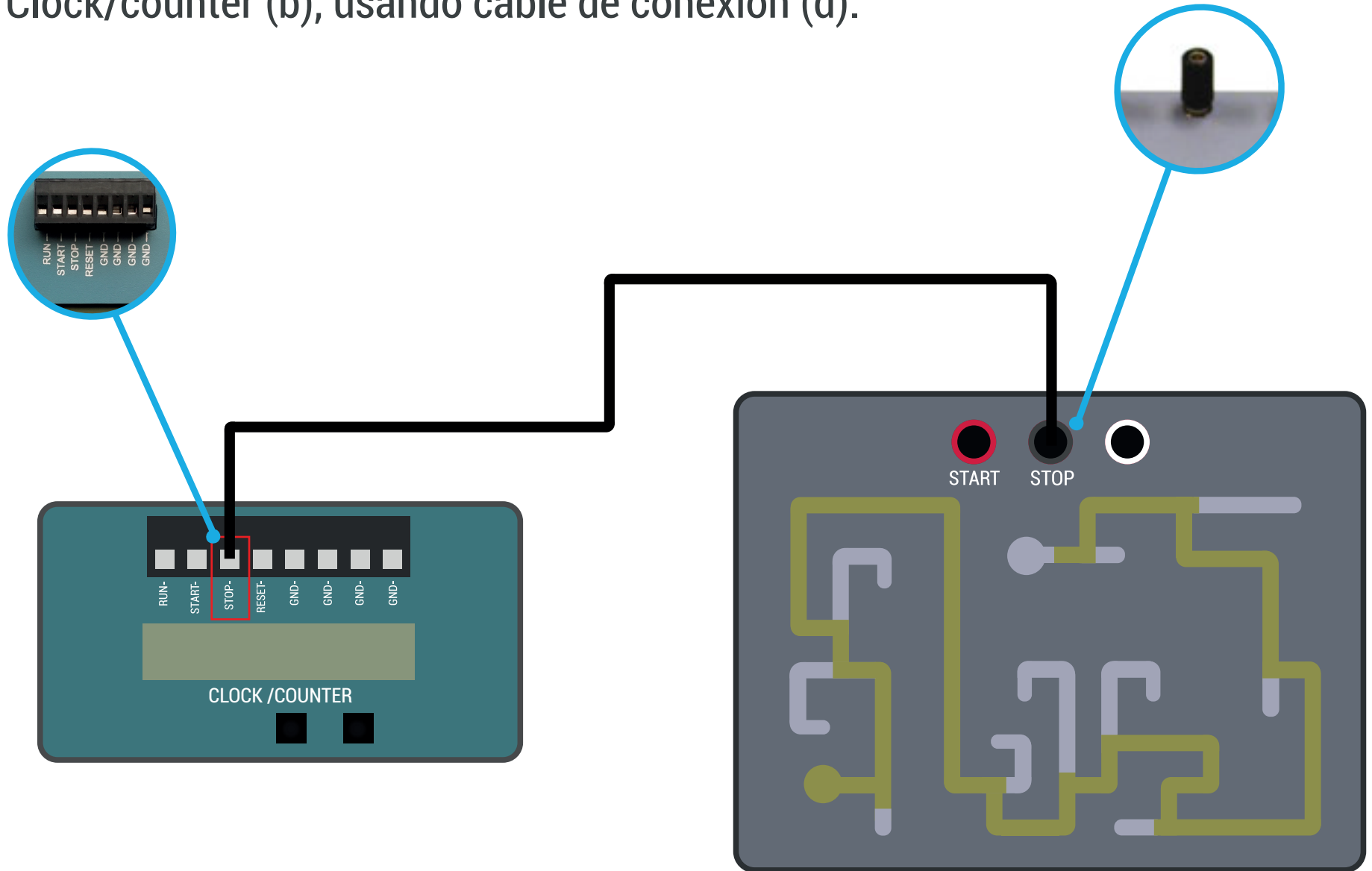
CONEXIÓN

01. Conectar START de laberinto (a) con START del Clock/counter (b), usando cable de conexión (d).



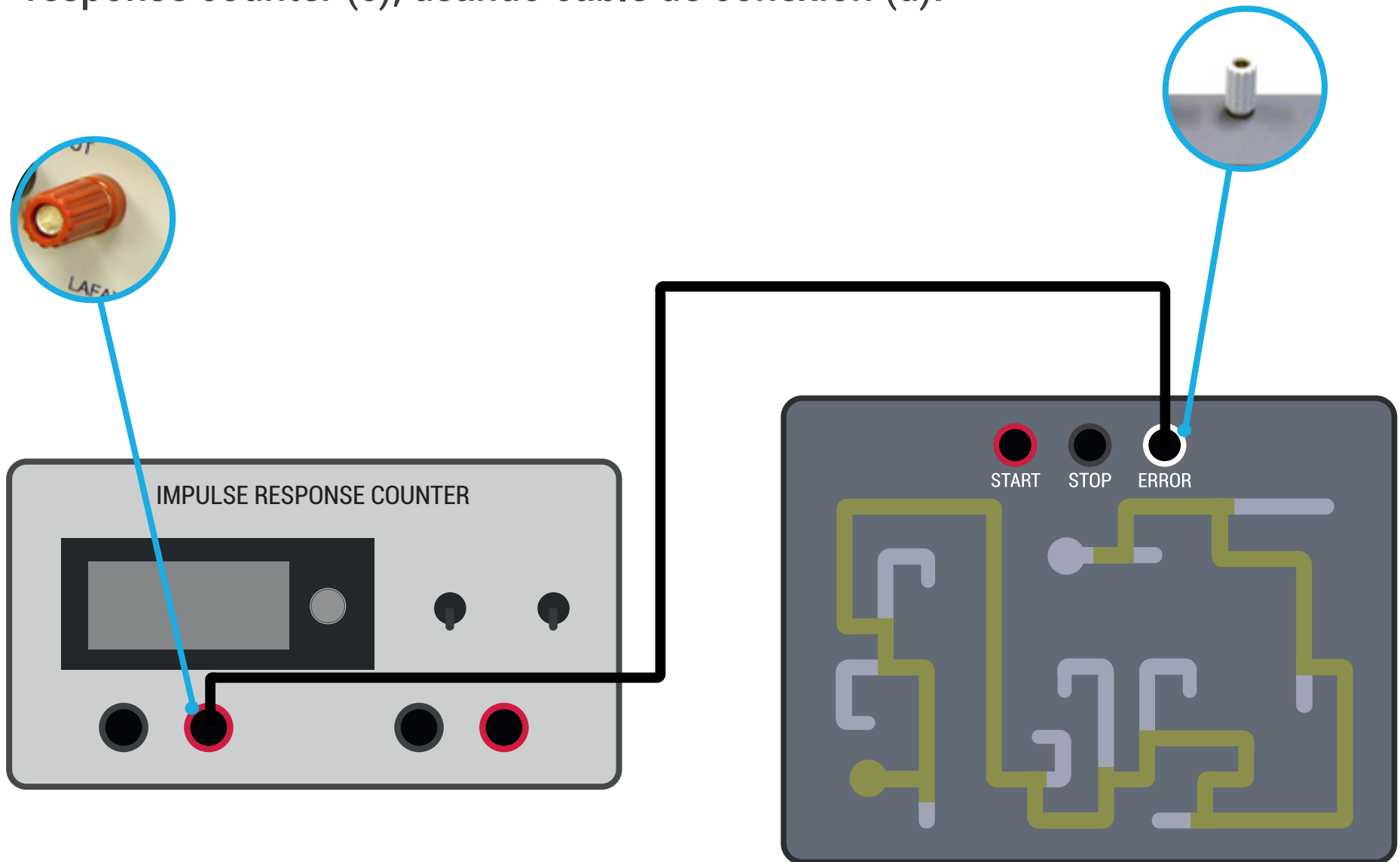
CONEXIÓN

02. Conectar STOP de laberinto (a) con STOP del Clock/counter (b), usando cable de conexión (d).



CONEXIÓN

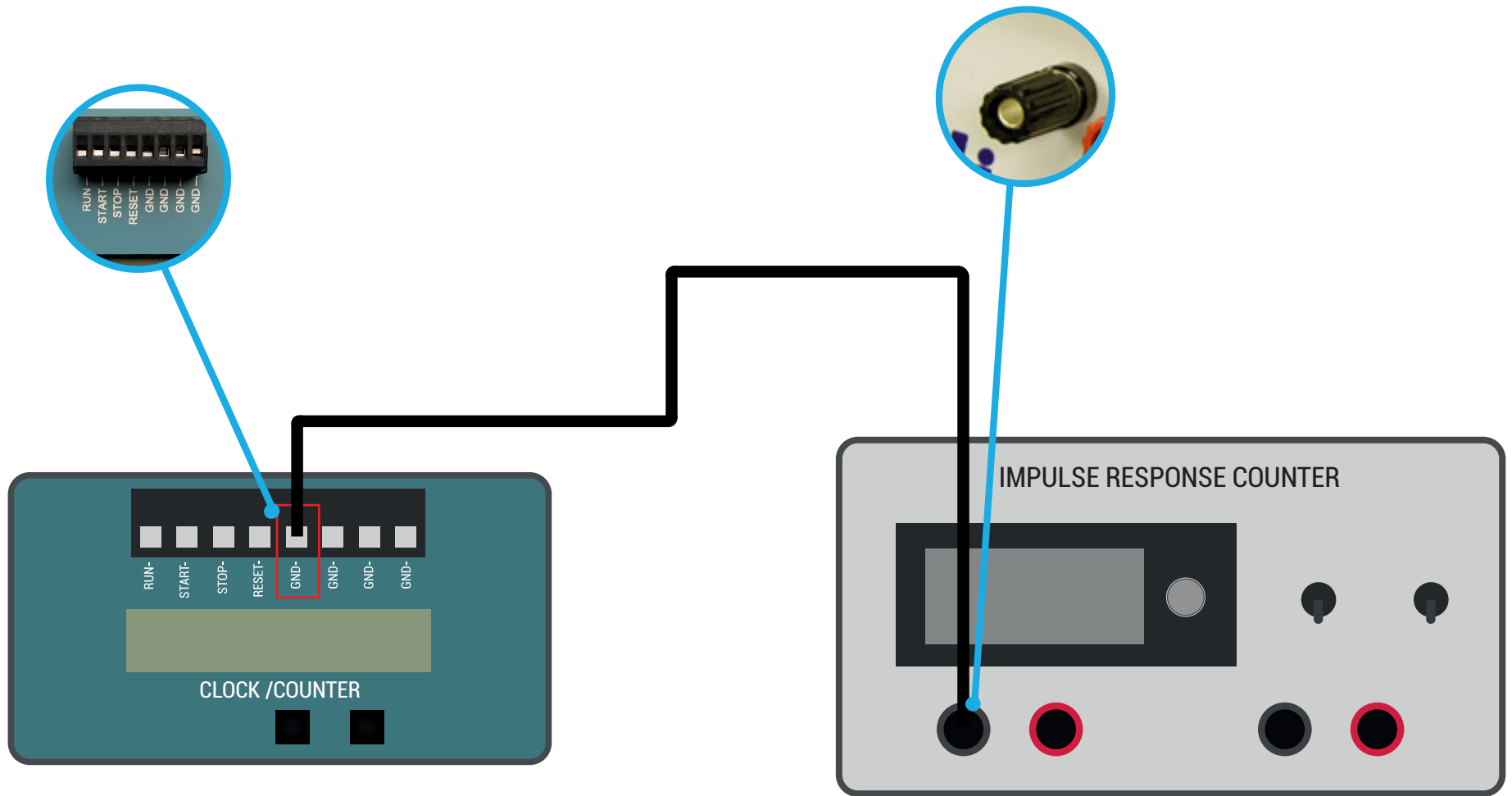
03. Conectar ERROR de laberinto (a) al impulse response counter (c), usando cable de conexión (d).



5.

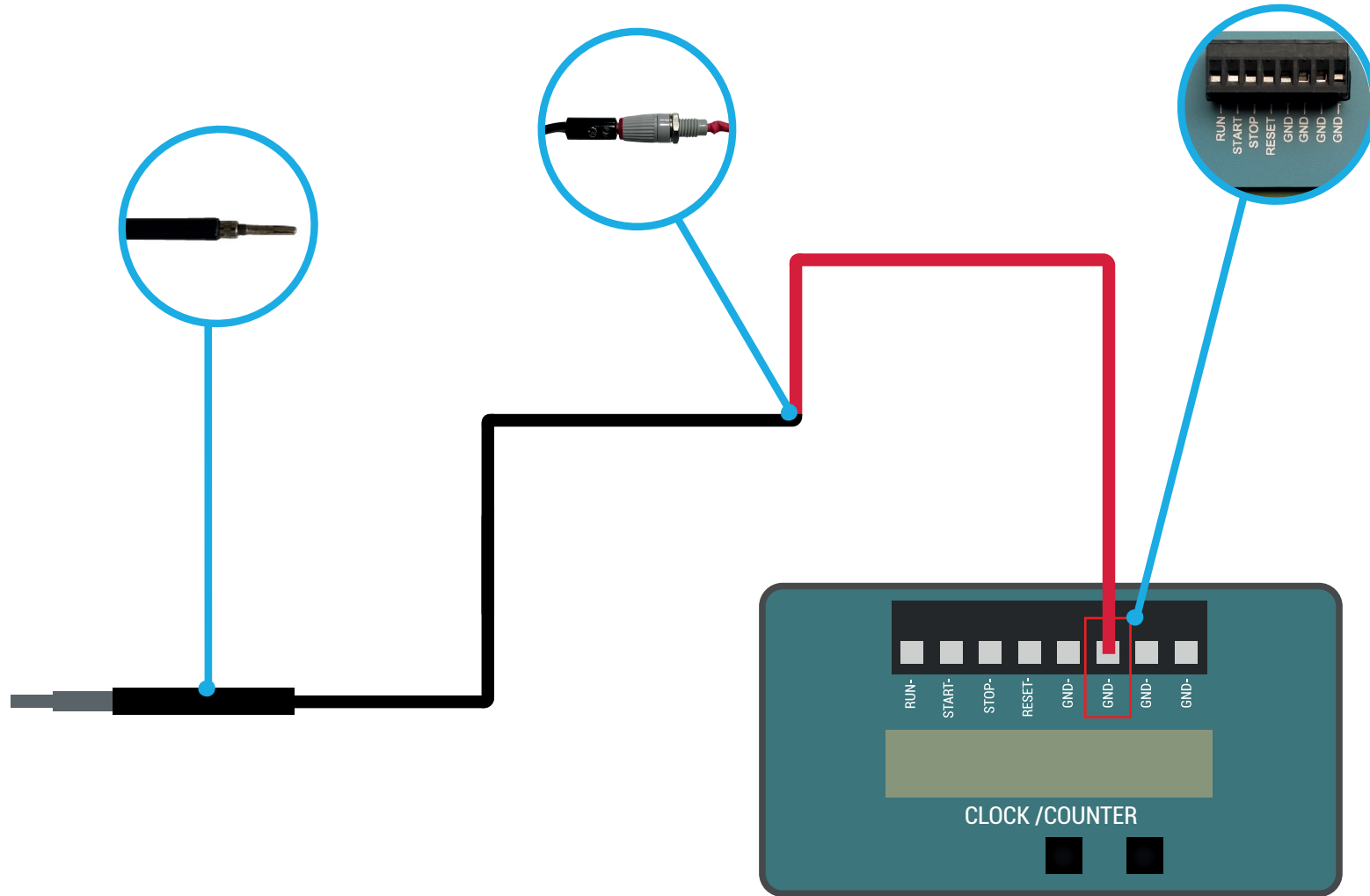
CONEXIÓN

04. Conectar la entrada del impulse response counter (c) a GND (ground) del Clock/counter (b), usando cable de conexión (d).



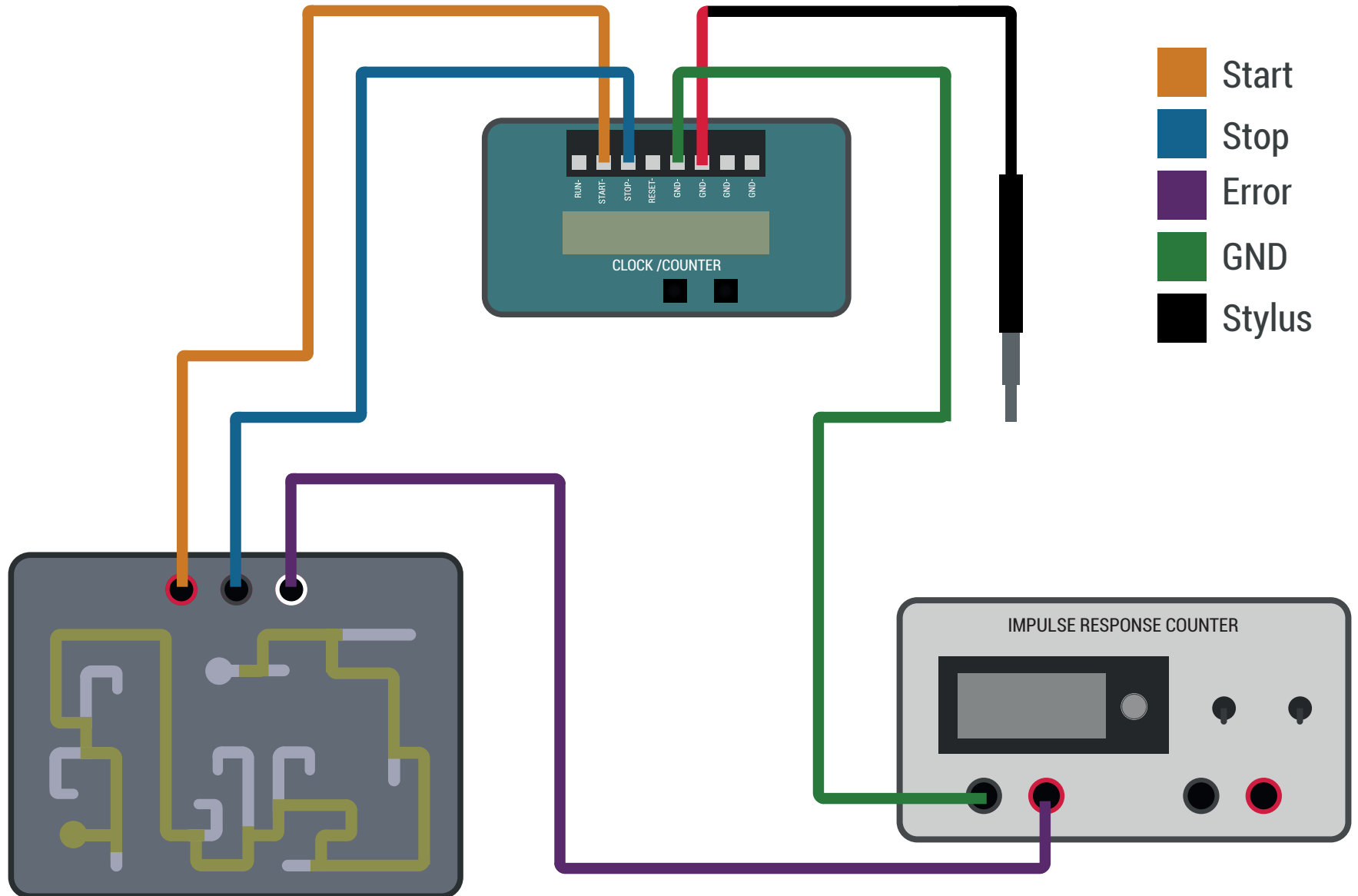
CONEXIÓN

05. Conectar STYLUS (g) a la EXTENSIÓN (f), finalmente a GND (ground) de Clock/counter (b).



VISUALIZACIÓN GENERAL

Verifica las conexiones.





support@delarosaresearch.com
(+57 1) 6275686
(+57) 3003642343
Cll 147 A # 48 - 08. Bogotá, Colombia
2550NW 72nd Ave. Suite 115. Miami, Fl. 33122.