

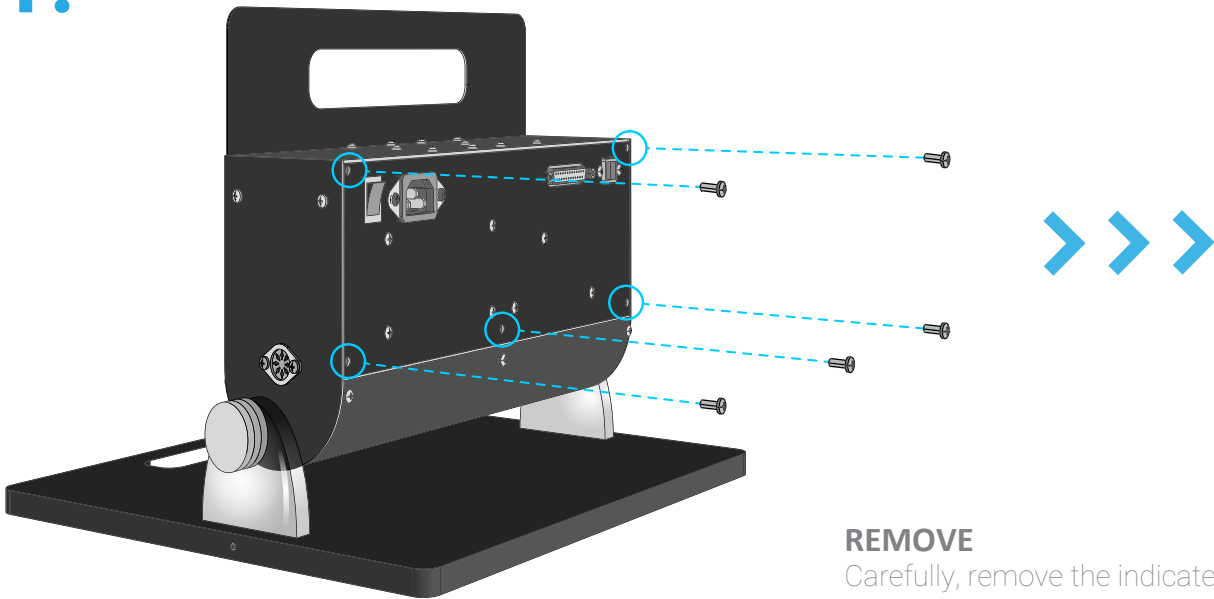
# LIGHT DISCRIMINATION APPARATUS

Rear Faceplate  
Quick  
Replacement  
Guide.

Model  
**14011A**

# PROCEDURE

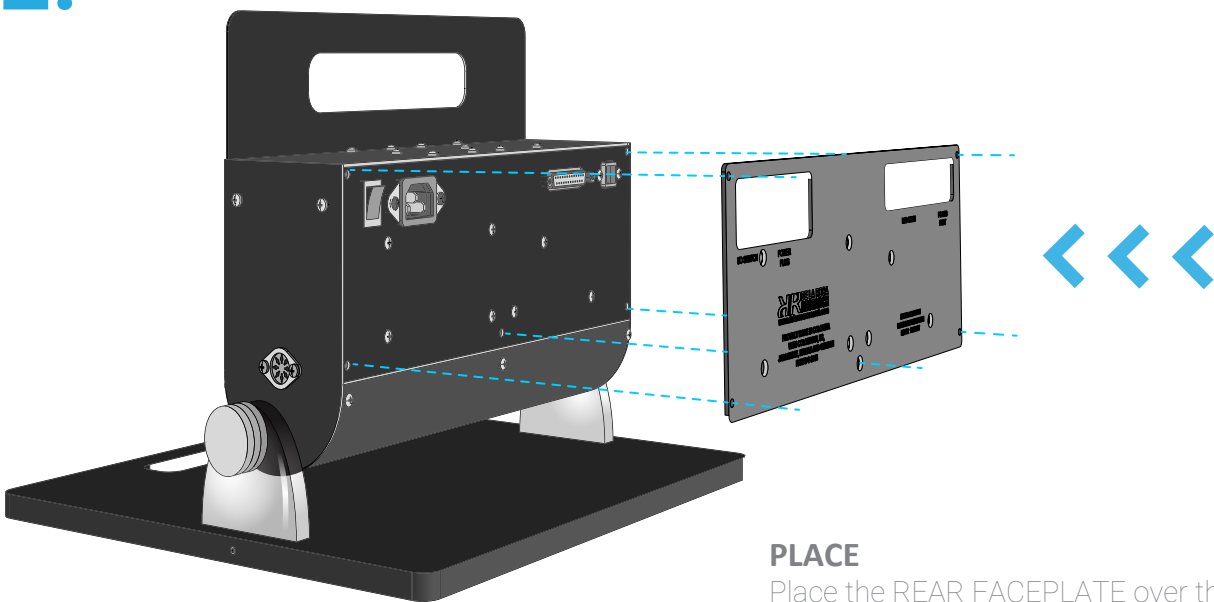
1.



## REMOVE

Carefully, remove the indicated screws using a phillips screwdriver.

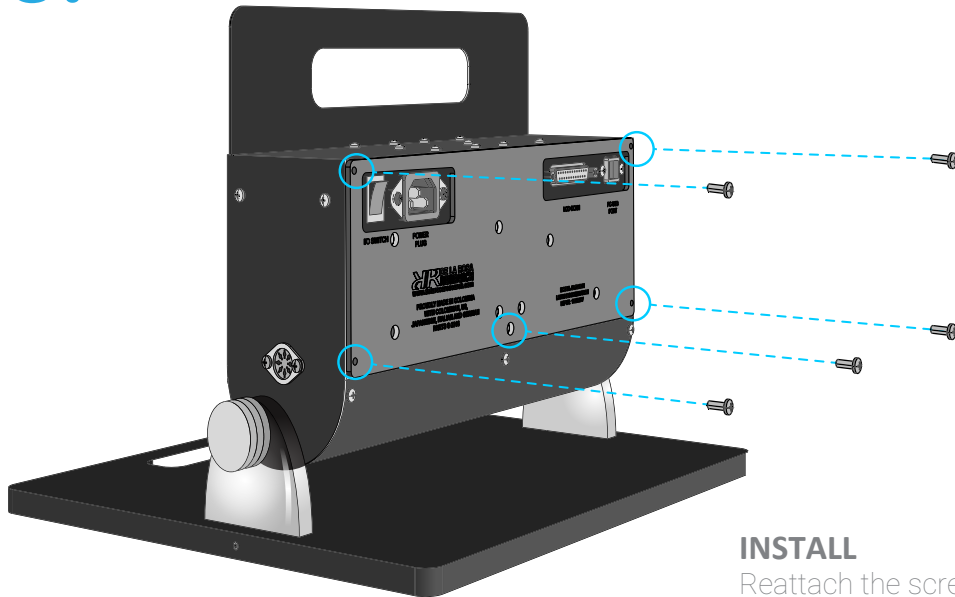
2.



## PLACE

Place the REAR FACEPLATE over the rear part of the equipment making the faceplate holes to match the ones left by the removed screws (previous step). Also, make sure the bigger holes matches the remaining screw heads.

3.



### INSTALL

Reattach the screws that were removed in the first step. Place one screw at a time without tightening it, until all screws are reattached. The screws should be set firmly but carefully and not too tightly.

4.



### CLEAN

Wipe the surface with a lint free damp cloth. Do not use solvents or chemical substances. Those may deteriorate the equipment surfaces or paints.

