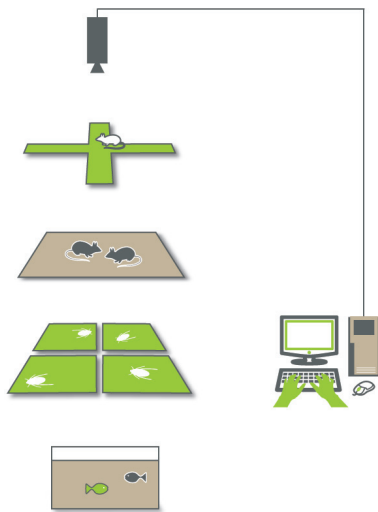


EthoVision® XT is the best solution on the market to automate the tracking and analysis of animal activity and behavior, no matter how straightforward or sophisticated your test may be.



EthoVision XT can be used to test any animal in any set-up.

A versatile product in every sense of the word, it can be used to track any animal in any kind of test set-up. A basic EthoVision XT set-up allows you to automate standard behavioral tests such as the water maze, plus maze, and open field test. But it is also a platform for fully integrated systems with hardware control for sophisticated operant experiments, including the five choice serial reaction time task. And it is just as easily used to automate high-throughput experiments, such as zebrafish larvae activity monitoring in 96-well plates.

WHY ETHOVISION XT IS THE TOOL OF CHOICE

- The industry standard with more than 7500 peer reviewed publications and over 2000 sites
- Most powerful features and superior detection methods

- Most cost effective solution
- Flexible to fit your choice of hardware
- Versatile to automate:
 - all standard behavioral tests
 - sophisticated set-ups with hardware control
 - high-throughput research

VIDEO TRACKING MADE EASY

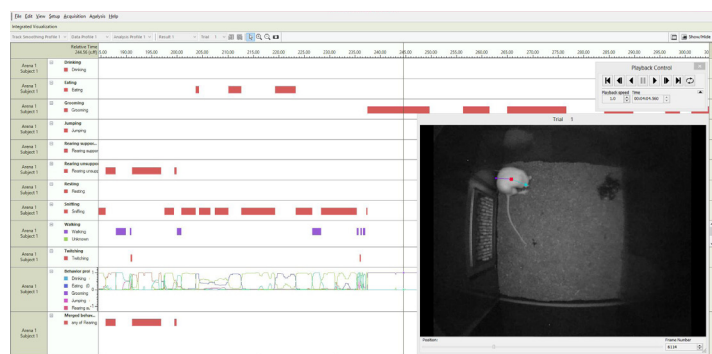
The whole point of automating your research by using software is making things easier and more reliable. EthoVision XT is simple to use, even for first time users. Get things up and running quickly with the user guided set-up and experiment templates, which include all standard paradigms, such as the water maze, radial arm maze, plus maze, and 96-well plate studies. Built-in video tutorials offer you additional help along the way.

BATCH ACQUISITION AND ANALYSIS

Batch acquisition saves you a lot of time by tracking all of your video files automatically with one push of the button. You can also run automatic analysis and even configure this to your specified data selection and selection of independent variables. After acquisition, (batch) analysis will take place automatically. You can even run acquisition and analysis overnight!

RAT BEHAVIOR RECOGNITION

FULLY AUTOMATED



This new software automatically recognizes ten rat behaviors: drinking, feeding, grooming, jumping, supported rearing, unsupported rearing, twitching, sniffing, resting, and walking. The system is accurate, consistent, and tireless, giving you the same results every time. Human observers get tired, but with the Rat Behavior Recognition software, you can perform 'round the clock' observations, efficiently. There is no need for extra training, not even when you change the set-up or strain of rats. You get the same consistent results each time.



GROUP STATISTICS AND CHARTS

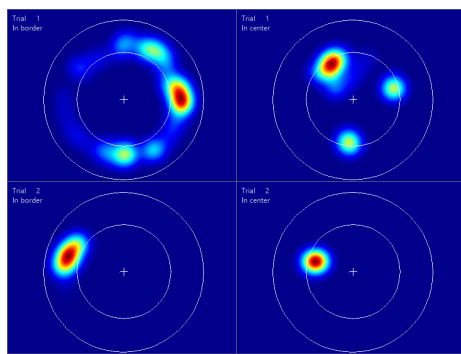
Compare the results between groups in tables and graphs to get an immediate feel for trends in your data. Compare treatment groups alongside each other or look at the differences within treatment groups over time. You can arrange the graphs in numerous ways and export them easily.

SERIES OF TRIALS FROM LIVE VIDEO FEED

Now you can acquire a series of trials automatically. Combine start conditions (e.g. the animal is detected) with stop conditions (e.g. 60 seconds later) and with an interval time so that you have time to replace the animal, and EthoVision XT will take care of the rest

HEATMAPS

What was your animal up to? It is easy to spot where it spent its time when your data is presented in a heatmap. The new EthoVision XT has a built-in Heatmap Generator. This intuitive visual representation of animal distribution is great for presentations and publications. The high-quality export options allow you to use them any way you'd like.



TRACK FROM UP TO FOUR VIDEO SOURCES

If you want to track in multiple arenas simultaneously, you can place multiple arenas under one camera. However, now you can also use a combined feed of up to four full-format camera images. This allows you to track in more detail and eliminates the need to put the arenas next to each other.

WE OFFER COMPLETE SOLUTIONS

We offer more than just software, we offer complete test set-ups, including instruments, cameras, computers, and free 24/7 technical support. Check out our package deals at www.noldus.com.

A WORLDWIDE COMMUNITY OF USERS

With EthoVision XT you are always on the right track. But don't take our word for it, take it from the worldwide community of EthoVision users. Find them online at our LinkedIn Noldus EthoVision Users Group and their work in thousands of publications!

EthoVision XT 10 runs on Windows 7 and Windows 8 (32 and 64 bit).

ETHOVISION XT 10 - FREE TRIAL

Go to www.noldus.com/ethovision to get your 30-day free trial!

INTERNATIONAL HEADQUARTERS
Noldus Information Technology bv
Wageningen, The Netherlands
Phone: +31-317-473300
Fax: +31-317-424496
E-mail: info@noldus.nl

NORTH AMERICAN HEADQUARTERS
Noldus Information Technology Inc.
Leesburg, VA, USA
Phone: +1-703-771-0440
Toll-free: 1-800-355-9541
Fax: +1-703-771-0441
E-mail: info@noldus.com

We are also represented by a worldwide network of distributors and regional offices. Visit our website for contact information.

Due to our policy of continuous product improvement, information in this document is subject to change without notice. EthoVision is a registered trademark of Noldus Information Technology bv.

© 2013 Noldus Information Technology bv. All rights reserved.

WWW.NOLDUS.COM